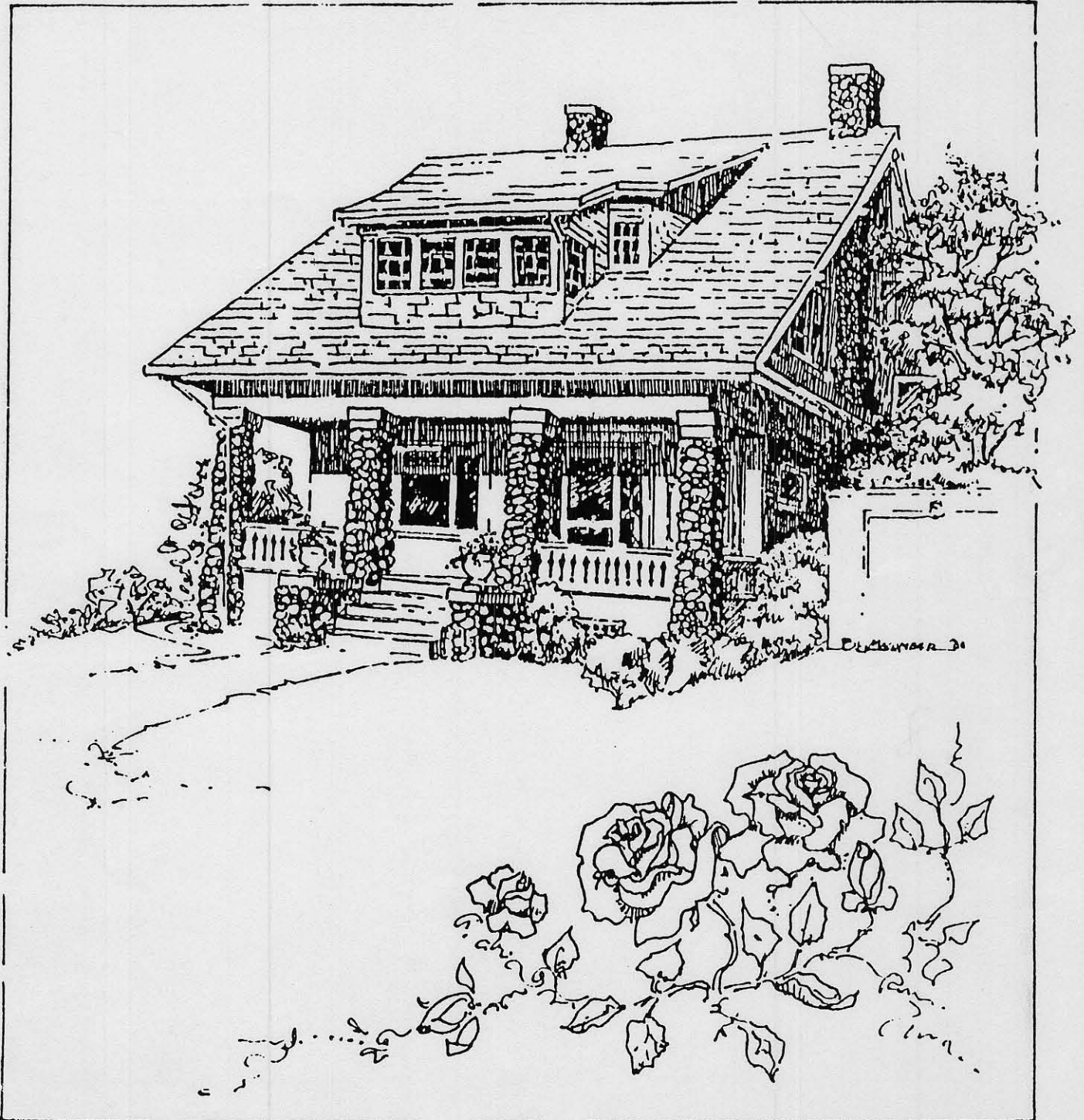




Ladd's Addition Conservation District Guidelines



Acknowledgements

The guidelines were written by a subcommittee of the Ladd's Addition Conservation District Advisory Council, composed of George Eighmey, Judith Rees, Richard Ross, James Hamrick, Lawretta Morris, and John Southgate. This handbook was prepared for the Historic Landmarks Program by Judith Rees and Fred Merchant with special assistance from the following individuals:

Richard Bellinger - Layout, Graphics & Maps

Barbara Macomber - Cover illustration, Tilley House (1911)

David Yamashita - Tree Sketches, pages 6 & 7

Contact Agencies

Ladd's Addition Conservation District Advisory Council:

Call 823-7700 for the telephone number of the current chairperson.

*For information on Design Review and Special Events:
walking tours, siding removal projects*

Portland Historical Landmarks Commission: 823-7700

For information on Design Review and Building Permits

Urban Forestry Commission: 823-4489

*For information on trees: pruning, spraying, removal,
and planting*

Portland Development Commission: 823-5300

*For information on low interest rehabilitation loans for
single-family and multi-family residences*

Oregon State Historic Preservation Office: 378-5001 (Salem)

*For information on state and federal tax incentives:
special assessment for historic properties and federal
investment tax credit*

Historic Preservation League of Oregon: 243-1923

*For information on federal tax incentives: preservation
easements*



Ladd's Addition Conservation District Guidelines

**Portland
Historical Landmarks
Commission**

George Sheldon, Chairman
Deborah Novack
Chet Orloff
Sharr Prohaska
Richard Ritz
Susan Seyl
John Warner

**Ladd's Addition
District**

Advisory Council

Fred Merchant, Chairman
James Hamrick
Carol McIntosh
Deborah Novack
David Yamashita

Bureau of Planning

John Southgate, Landmarks
Commission Staff

Adopted by the
Landmarks Commission:
February 26, 1986

Adopted by the City Council:
February 10, 1988

